

## CADD Services

### At-a-Glance

ISM provides cost-effective commercial and residential Computer Aided Drafting and Design (CADD) Services to our customers allowing them to focus on their core business without sacrificing quality to their clients.

### ADVANTAGES

- \* Visualize Complex Designs
- \* Accelerates Design Process
- \* Reduces Turnaround Time
- \* Avoid Costly Mistakes
- \* Easily Make Corrections

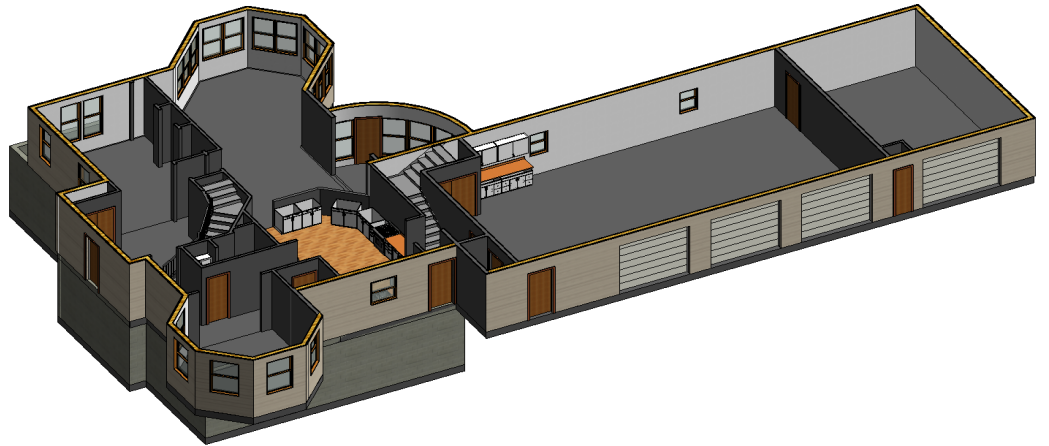
*"I have been extremely pleased working with ISM Services, Inc. and have been surprised with how quickly and professionally the firm has handled our project. ISM was very positive right from the outset.*

*Thank you for designing an amazing home and making the design phase truly an enjoyable experience. Overall, the pricing and quality of services offered by ISM represents a good value for their clients. The whole team were very helpful at all times and are well recommended!"*

**Thomas Tretheway**  
Smola Construction Company

## Design Your Clients' Vision

ISM Services, Inc. offers drafting in all phases of a job from schematic design to final construction documents and in all disciplines of construction including Architectural, Civil, Landscape, Electrical, Mechanical, Plumbing, Structural, and Interiors. Our Design Services can be brought in at any stage of a job, preventing clients from having to increase staffing or overhead costs to fulfill obligations.



### ISM CADD Services offers:

#### Reduced design time

Is your project on a strict deadline? ISM's CADD Services reduces design time by creating a design based on a previous design, from photos, or from scratch. Our dependable drafters have a solid understanding of drafting techniques and engineering terminology with over 100 years combined drafting experience.

#### Savings on time and money

Can't decide if you can afford this project? No job is too big or too small for ISM. We offer the ability to pursue any size job thereby reducing your in-house staffing requirements and the need to stay up to date on software and hardware.

#### Additional services

Need additional services for your clients? ISM also offers on-site and off-site drafting, existing (as-built) condition documentation, scanning and converting of existing hard copy drawings into CADD files, and large-scale plotting/copying on several media types. And don't forget our premier service of 3D Visualization for renderings, virtual walkthroughs, and prototypes.

**ISM Services, Inc. is committed to providing the highest level of service and quality for our clients** whether on a single project, surge support during busy periods, or complete CADD management and outsourcing services.

Founded in 2004, ISM Services, Inc. quickly established itself as a leader in the development and implementation of Comprehensive Facilities Management Services. With an ever-growing staff of hand-picked experts, we now offer a wide variety of services. Our solutions are delivered with the right combination of leading-edge technologies, years of experience, and unparalleled support.

Our Mission is to provide our customers with comprehensive, proactive Programs and Services that exceed requirements and are delivered on time, every time; have personnel with the vision and knowledge to recognize the future needs of our customers and develop new applications to meet their needs; provide best-in-field and best-in-business practices for streamlined, efficient planning and execution; and are the best value for the money.

## Services and Solutions

### Design Services

- Computer-Aided Drafting and Design (CADD)
- 3D Visualization Services (3DVS)
  - Architectural
  - Training
- Mobile Applications & Gaming
- Large-scale Printing & Copying
- 3D Printing

### Technical Furniture

- Assembly
- Installation
- Relocation

### Workplace & Asset Management Solutions

- Integrated Workplace Management System
  - Value-added Reseller & Implementation Specialists for ARCHIBUS®
- ISM Key Control for ARCHIBUS
- Environmental Health & Safety for ARCHIBUS

### Software Solutions

- Application Development
- Web Development
- Software Migration
- ARCHIBUS Customization & Personalization
- Application Maintenance, Up-gradation, and Integration

ISM Services, Inc.'s expertise, knowledge, and services sets us apart in our capability to partner with clients and achieve strategic and operational goals. Our team of experts brings the knowledge gained from a wide range of projects. We recognize that our future is based on our ability to establish and maintain long-lasting relationships with our clients.

### *Adapting Technology to a Changing World*

## Find out more...

Learn more about how ISM's 3D Visualization Services can help you on your next project and take a virtual tour of our work by visiting our website:

<http://www.ism-corp.us>